

AUTOMOBILE COLLECTION & COLLECTOR TRACTORS

SATURDAY, SEPTEMBER 10TH, 2022

10:00 AM MDT HAROLD & LOIS ARNOLD, MCINTOSH, SD

Sale Location: SD HWY 12 - Corson County Fairgrounds - 615 3rd Ave W, McIntosh, SD 57641

For more info or to view this collection contact: Beth at 605-848-1492 or Weishaar Auction Service 701-872-5299 / 701-876-9023



1926 Ford Model-T Roadster



1930 Chevrolet Sedan



1931 Ford Model - A



1938 Ford



1954 Mercury



1940 Buick Street Rod



1958 Chevrolet Bel-Air



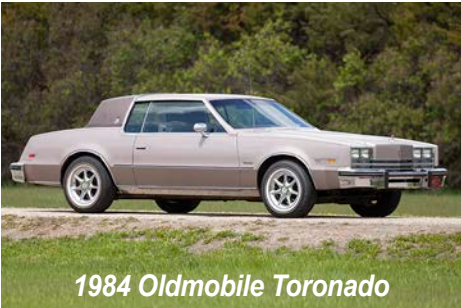
1960 Cadillac Coupe Deville



1970 Mercury Stationwagon



1985 Cadillac Sedan



1984 Oldmobile Toronado



1984 Cadillac Eldorado



1923 Ford Model TT



1929 Chevrolet Truck



1953 Chevrolet Truck



1949 JD Model MC



1971 IHC 2656 Hydro



Ford 8N



1940 John Deere B



1949 John Deere B



1952 John Deere A



1959 John Deere 430



1958 Minneapolis Moline 5 Star



1959 Minneapolis Moline Jet Star

For more photos and sale information, visit weishaarauctions.com



AUCTIONEERS:
SCOTT WEISHAAR (#493)
CHAD STOLTZ (ND #39)
CLERK: WEISHAAR CLERKING SERVICES, LLC #2031

LIVE AUCTION
& INTERNET
BIDDING

701-872-5299
701-290-0546

Terms are Cash / Cashable Check

All sales are final and sold "As Is, Where Is" Not Responsible for Accidents.

All announcements made Day of Sale will take Precedence over All Printed or Online Material!

SEE BACK FOR DETAILED LISTING →

COLLECTIBLE CARS

All Cars are in Running Condition

- 1903 Oldsmobile Kit Car** – Replica: Purchased in Deadwood in Aug 2009, INTEK Briggs & Stratton 8.0HP Gas Engine and has Pull Behind Bench Cart
- 1926 Ford Model-T Roadster** - All Original: Car Purchased in McIntosh, SD in 1925 New by Harold’s uncle Henry Arnold for \$265.00. Original Engine, 3-speed Warford Transmission, Have Set of Side Curtains, Ext Color: Dark Green, Int. Color: Blk Miles Unknown, VIN#: 12707949
- 1930 Chevrolet Sedan:** Original Engine, Manual Trans, Ext. Color is Maroon, Int. Color is Grey (Miles: 81,475 miles) VIN#: 1AD15292
- 1931 Ford Model-A Deluxe,** Convertible: Purchased by Harold’s Uncle Ben Arnold. Installed 5-speed Transmission from Chev. S-10 Pickup, Original Engine, Side Curtains Included, Ext. Color: Tan, Int. Color: Tan, Miles Unknown, VIN#: A619897
- 1938 Ford:** Purchased at Harold Uncle Sam Arnold Estate Auction & Harold restored it. Original-Overhauled Engine in 2001, Manual Trans, Ext. Color: Red, Int. Color: Grey, Low Miles, VIN#: 184515344
- 1940 Buick Steet Rod:** Mounted on a 1991 Cadillac Chassis. 5.7 Cadillac 283 Engine, Auto Trans., Ext Color: Turquoise, Int. Color: Grey, Miles Unknown, VIN#: 53882654
- 1954 Mercury:** Purchased New by Harold’s father, John Arnold, Orig. Engine, Auto Trans, Ext. Color: Black, Int. Color: Cream (Miles: 61,017) VIN#: 54WA59394M
- 1958 Chevrolet Belair:** 4-door Hardtop: Purchased in Tucson, AZ Engine 283 – Overhauled, 4-Barrel Carb., PowerGlide Transmission Ext. Color: Turquoise & White (Miles: 7,748) VIN#: F-58F118147
- 1960 Cadillac Coupe Deville:** Purchased from Harold Brother-In-Law Gene Zimm, 390 Engine has been overhauled, Auto Trans, Ext. Color: Black, Int. Color: White/Black (Miles: 00400 on overhaul) VIN#: 60J089638
- 1970 Mercury Station Wagon:** 390 Engine, Auto Trans, Ext. Color: Dark Blue, Int. Color: Blue (Miles: 54,350) VIN#: OZ74YS74135
- 1984 Oldsmobile Toronado Brougham:** Original Owner: Howard Lockhart, (21,448 miles), V8 Engine, Auto Trans, Ext. Color: Brown, Int. Color: Brown (Miles: 21,448), VIN#: 1G3AZ57YXEE309360
- 1984 Cadillac Eldorado Biarritz Convertible:** Purchased from friend in Belle Fourche, SD, Replaced engine 2001 with a 5-liter Engine, Auto TransExt. Color: Black, Int. Color: Red (Miles: 8507 on New Engine) VIN#: 1G6AL6782EE631050
- 1985 Cadillac Sedan:** V6 Diesel 4-3, Auto Trans, 4-door, Ext. Color: Grey, Int. Color: Grey (Miles: 127,540) VIN#: 1G6CD69T3F4255061
- Parts:** Misc.Model T, Model A parts, Model T Windshield

COLLECTIBLE TRUCKS

- 1923 Ford Model TT :** Orig. Engine, Ext. Color: Black VIN#: IA51907
- 1929 Chevrolet:** Restored Box, 2-speed Aux Trans., 6-cyl Org. Engine, Former Owner: Virgil Anderson, Ext Color: Blue VIN#: 21LQ10680
- 1946 Chevrolet:** 216 Engine, 4-spd Trans., Ext. Color Black/Red, Int. Color: Cream, Miles Unknown, VIN#: 21PWK8017
- 1953 Chevrolet:** 216 Engine, 4-spd Trans., Ext. Color: Teal, Int. Color: Tan, (Miles Approx. 23,000) VIN#: N53J024358

PICKUPS

- 2007 GMC 3500 HD Duramax** 6.6L Turbo Diesel, 4x4, Auto Trans, 4dr, Leather, Air Suspension on the Rear Springs, Org Springs Included, Sells w/Fuel Tank & Toolbox, Ext. Color: White, Int. Color: Dark Grey (Miles: 59,671) VIN#: 1GTJK33667F544087
- 1987 Chevrolet Custom Deluxe 20** w/ Dew Eze Bale Pik-Up, 350 Engine, 4-spd Trans., (Miles: 53,956) VIN#: 1GCGV24K24HJ111257

COLLECTIBLE TRACTORS

- 1949 Model MC John Deere:** Purchased new by John Arnold
- IH Farmall McCormick H,** Narrow Front, Good Tires, w/Woods (ser#: 762935) Belly 306 Mower, 6-ft
- Ford 8N,** 4spd Trans, PTO, 2pt Hitch
- 1943 Ford 2N** – Rubber & Steel, Sherman Shift - High/Low (ser#: 123505)
- 1971 IHC 2656 Hydro,** 4-hyd., 1000-PTO (ser#: 2460122U014228*)
- 1940 John Deere B** (ser#: B125589), NF, New Goodyear Tires, Motor is Seized Up
- 1952 John Deere A** (ser#: 672100), Rol-o-matic, JD Hydraulic Powr-Trol
- 1949 John Deere B** (ser#: B248709) Wide Front
- 1959 John Deere 430** (ser#: 159256)
- 1959 Minneapolis Moline Jet Star,** Tires – Like New (ser#:16502134)
- 1958 Minneapolis Moline 5 Star** (ser#: 11000772), Good Tires
- 1949 McCormick Farmall Cub** w/manufactured Bar Sickle Mower (ser#:11582)
- 1916 Ford Model T** - converted into a Tractor
- 1975 Allis Chalmers A-C 7000,** has a set of duals (ser#: 70G0189)
- Oliver 88 w/248 Farmhand Loader** (ser#: 91 772 872)
- 2 - John Deere Stationary Engines** (1 doesn’t run)
- Walk Behind Tractor**

SHOP TOOLS & EQUIPMENT, ATV, TRAILER

- Car Lift** - Direct Lift, model AB-1396 (ser# 13023), 115VAC, Electric over Hydraulic (Black)
- Shop Tools** – Craftsman, Misc. Large Assortment -/ **Stackable Toolbox**
- Merlin 150 Stick Welder / 230 AMP AC/DC Welder**
- Honda Harmony EN2500 Generator / Welding Table / Fulcan Anvil**
- Cummins 2-ton Engine Lift / 6-ton Bench Press /**
- Ryobi 8” Drill Press DP80 / Bench Grinder / Makita Shop Saw Hydraulic**
- Porta Power Kit, 4-ton / Posi Lock Gear Puller**
- Portable Acetylene / Oxygen Torch Set / 2 ¼ ton Floor Jack**
- 6-ft Height Scaffolding** – Like New
- Predator 3100 PSI, 2.8 GPM 6.5hp Gas Power Washer**
- Measure Wheel / Yard Sprayer w/Elect. Motor**
- Pro Tech Bandsaw on Stand / Tires - Rims**
- Goodrich Heavy Duty Tire Tubes / Aluminum Receiver Hitch Rack ATV Ramp / Elect. Leaf Blower / Jack Stands**

- 2009 Artic Cat Prowler XTX 700 EFI,** Cab, Radio, Front Wench, Front Hitch (1480 miles), VIN#: 4UF09MPV59T303651
- 2005 Load Trail GN Flatbed Car Trailer,** 16 x 8, w/5000lb Winch, Tires Like New

YARD EQUIP. & MISC. EQUIP

- 2 – 300gal Fuel Tanks on Stands,** Gravity ow
- Electric Yard Tiller**
- Mack Line Yard Trimmer**
- Dany-Lion Killer Roller**
- 2003 Small Utility Trailer**
- 2 – Swisher Pull-behind Rotary 60” mower** with I/C 14.5hp Gas Engine
- 2 – Ferguson 2-bottom Plow**
- Oliver Superior Drill**
- 30ft Drag** (harrow)
- Buhler Farm King 840 7-ft Snowblower** – Like New
- Old Wood Splitter**
- Danhuser Posthole Digger** w/12-inch auger

ANTIQUES

- Collection of Old Cast Iron Toy Tractors**
- 2 - Antique Horses,** 1 is Iron
- 1 - Antique Toy Riding Tractor**
- 1914 Model-T Front** - Large Wall Decor
- Misc. Crocks** - Redwing, Water Cooler w/Spout, Jugs, A Nice Selection
- Collection of Cast Iron Tractor Seats**
- “National One Cent” National Automatic Weighing Machine Co.**
- Old Horse Tack:** Bridles, Harness, Reins
- Collection of Old Padlocks**
- Copper Pots, Enamelware, Oil Lanterns, Old Saddles, Record Player, Willow Walking Stick, Jar of Marbles, jar of Buttons, Hesston Belt Buckle Collection, Old Milk Bottles, Old Water Pitcher & Basin, Western Lamps, Old Metal Bed Frames, Long Horns, Curio Cabinet, Excellent Selection of Antique Furniture: Buffet, 2 Wardrobes, 2 Small Library Cases, Old Bar w/Marble Top (cracked), Large Selection of Old Trunks, Suitcases, Washstand, Several Rocking Chairs & Chairs, Side Tables & More!**

GUEST CONSIGNMENT:

- 1944 IHC TD14 Track Tractor WWII-** Excellent Condition
- Call Wesley Arnold 605-273-9263**



You won't want to miss this sale!

For more pictures and info visit:
www.weishaarauctions.com